

Live TV with Dish OnStream by Boldyn Networks

Watch Live TV

<https://www.watchdishtv.com>

With OnStream, you can watch a lineup of live streaming TV accessible throughout your campus, even outside your own residence hall (on approved networks). OnStream lets you stream the live TV you love wherever you want on your own devices – no TV required.

- Watch through the web browser (Chrome browser is recommended) on your laptop, tablet or phone. No app required.
- No need to log in to watch Live TV – just connect to an approved WiFi network*.
- Go to www.watchdishtv.com or use the QR code to open your browser to the OnStream page.
- Also available on FireTV and Roku devices – search for the OnStream app. If the app is not found, your device may not be supported. Be sure to use the latest OS versions for the device.
- Need Support? Contact Boldyn Support at **(833) 548-7121**

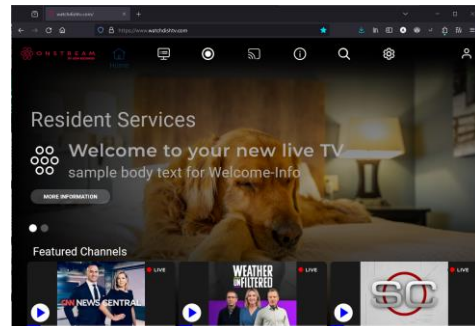


* Approved WiFi networks are selected by your school. The Live TV connection will drop when you move between an approved and an unapproved network, or onto mobile (cellular) data.



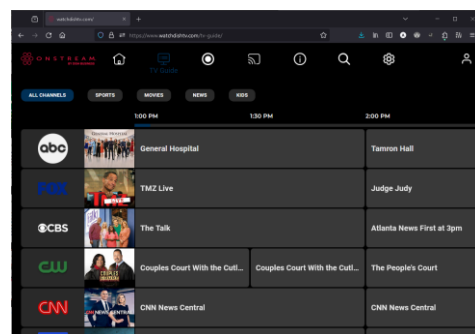
OnStream Features

On an approved WiFi network, open your favorite browser and go to watchdishtv.com (Dish recommends the Google Chrome browser but others should also work.)

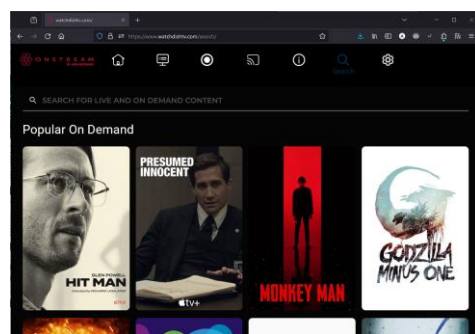


Go to the TV Guide to see what's on now and look ahead at programming for the rest of the day.

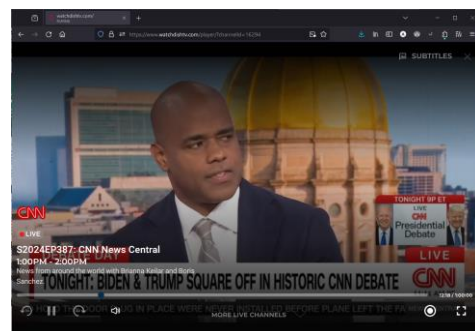
If desired, filter for Sports, Movies, News, or Kids programs to make scrolling through options easier.



You can also find shows via the Search page. Note that it also checks a global On Demand database, so you may be required to log into another service for those options (Netflix, Hulu, etc.).



Select a show to see details and/or watch it. While watching, you can go full screen, activate Close Captions, adjust volume, and open the mini-TV Guide at the bottom to see other watching option.

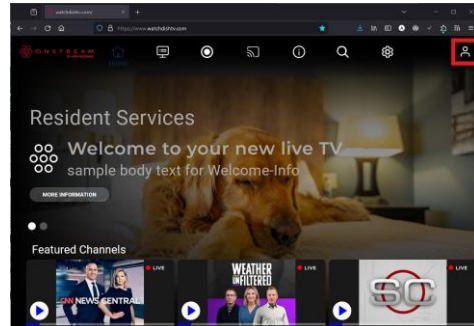


On your FireTV/Stick or Roku device, search for "OnStream" to find the DISH OnStream app.

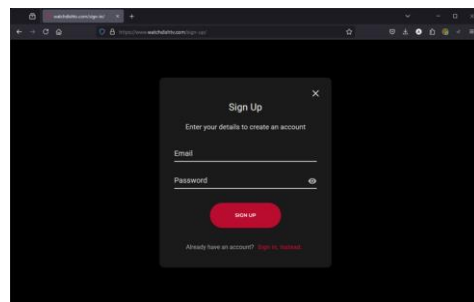


Using the OnStream DVR

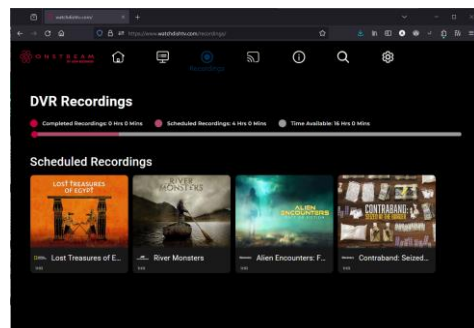
Click the icon on the top right of the homepage to log in (or create an account)



Sign In or click on the link to create an account. This account is only needed to associate your recordings so you can access them later. It is not needed to watch Live TV anytime.



Once you are logged in, you can see and manage your recordings on the DVR Recordings page.



To record a show, find it and click on in the TV Guide page to open the Program Details, then click "Schedule Recording". Or click the Record button anytime while watching the show.

